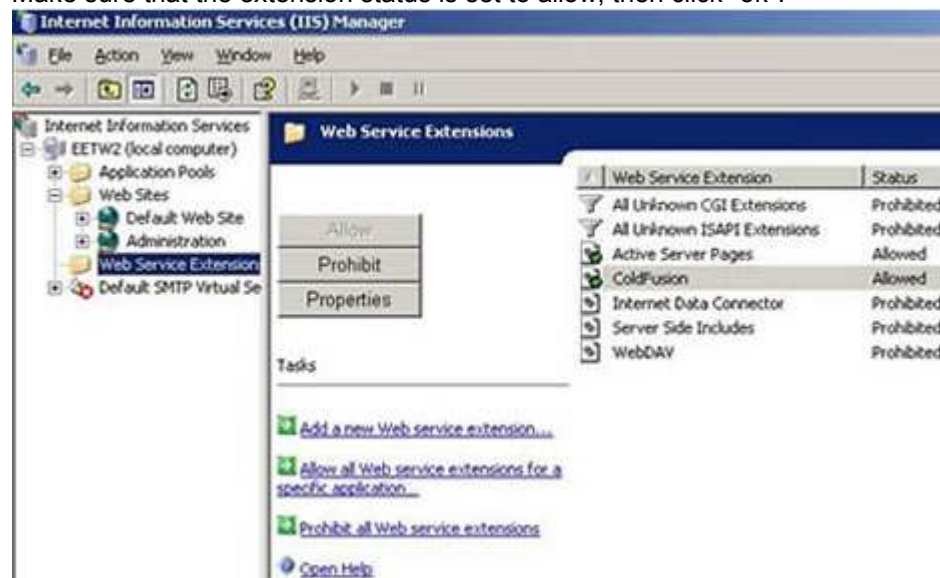


Installing ColdFusion on Windows 2003 with IIS 6

1. Install ColdFusion 5. ColdFusion pages will not process correctly at this point.

Note: Choose 'Continue' at the prompt stating the install is being done on an unsupported platform. Also, select 'Other' for the webserver, as IIS will not be detected.

2. Add a Web Service Extension to IIS for ColdFusion.
 - a) Run IIS Manager.
 - b) Open Web Service Extensions, and click on "Add a New Web service extension."
 - c) Type in a name for your web service extension (ColdFusion is a good one), and then type the path to the connector (c:\cfusion\bin\iscf.dll).
 - d) Make sure that the extension status is set to allow, then click "ok".

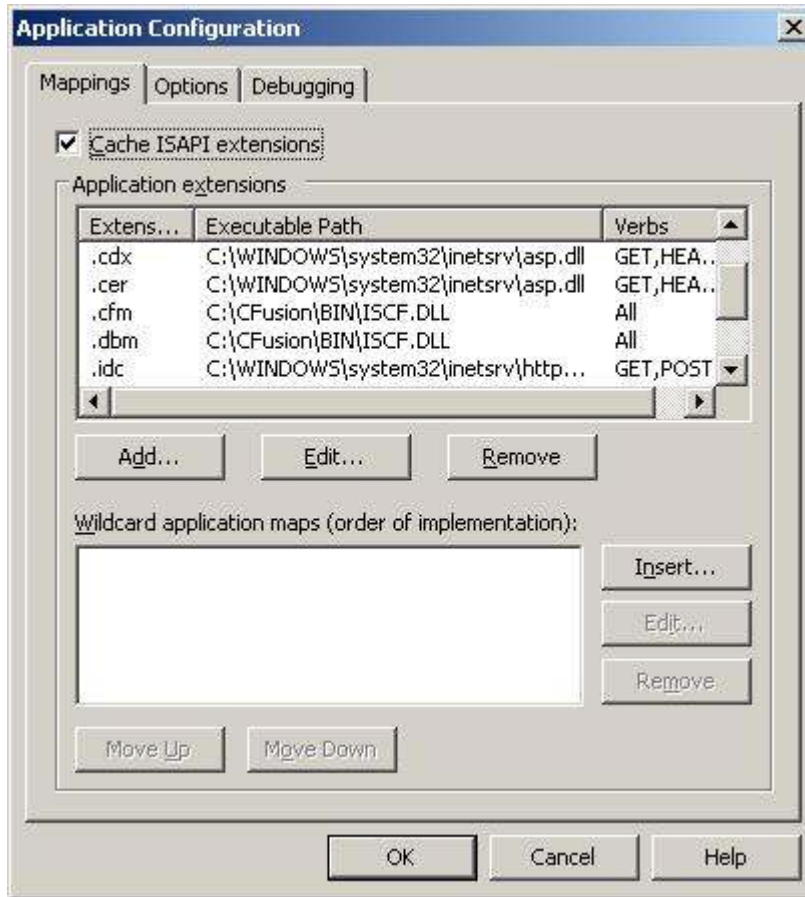


3. Enable iscf.dll as a Required File in the Web Service.



4. Map .cfm and .dbm to the iscf.dll extension.

- a) Click the "Home Directory" tab.
- b) Click the "Configuration" button. The "Mappings" tab should be on top.
- c) Click the "Add" button.
- d) The executable should be c:\cfusion\bin\iscf.dll (or wherever it's installed) and the extension is ".cfm".
- e) Repeat steps c and d, this time substituting .dbm for .cfm for the extension. Note: This step is purely for backwards compatibility with the previous ColdFusion extension naming nomenclature (.dbm instead of .cfm). It is recommended that you simply rename any templates with a .dbm extension to .cfm and omit this step.



5. Restart ColdFusion.